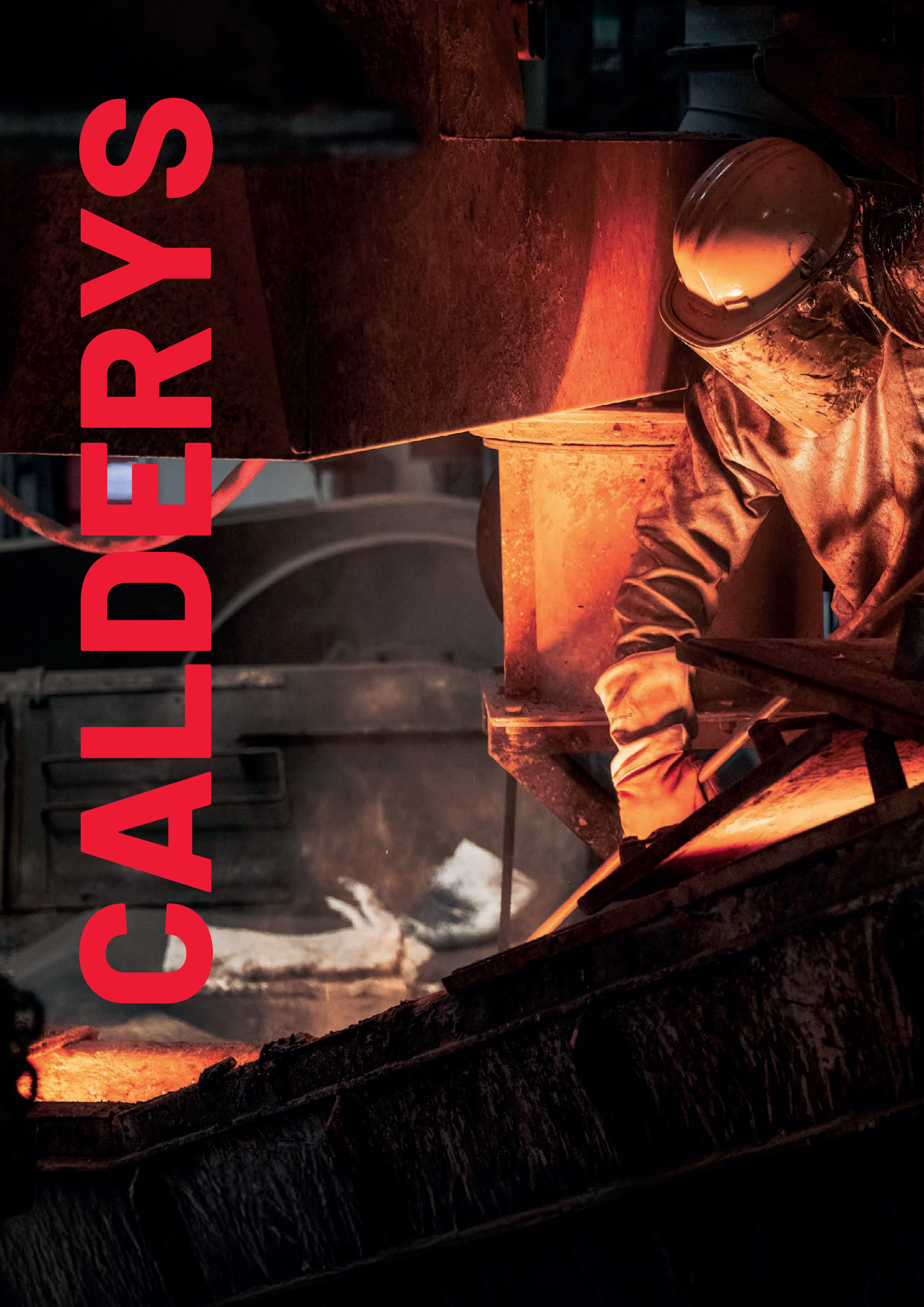


# REHEAT



# CALDERYS





Calderys is a leading global provider for industries operating in high temperature conditions. We specialize in thermal protection for industrial equipment with a wide range of refractory products, and advanced solutions to enhance steel casting, metallurgical fluxes and molding processes.

With a presence in more than 30 countries on the 5 continents and a strong footprint in the Americas through the brand HWI (HarbisonWalker International), Calderys' international network of experts ensures an end-to-end offer with tailored services.

Drawing on over 150 years of experience, we are constantly developing innovative products and techniques, optimizing costs and performance, combining world-class Research & Development and technical experts, as well as responsive supply chain and sales departments.

Our global structure allows us to design the customized solutions of today while anticipating the industries' needs of tomorrow.

Calderys pays particular attention to industry's impact on the environment and has a sustainability program articulated around three pillars: supporting our customers in their energy transition needs, improving our environmental footprint and being committed to people and local communities.

Health and safety are an integral part of how we do business, and our activities require the highest level of professionalism to carry out our projects. The same attention to detail that helps us provide personalized products and solutions is also applied to our rigorous health and safety criteria — applicable to both our own employees as well as subcontractors and temporary workers.

Product name	Chemical composition		Maximum operating temperature (°C)	Construction requirements (t/m³)	Standard water addition volume(%)	Application areas, features
	Al <sub>2</sub> O <sub>3</sub>	SiO <sub>2</sub>				
Castable						
TOCAST-15	53.0	38.0	1500	2.13	12.0 - 13.0	General-purpose castable
TOCAST-EX15	57.0	32.5	1500	2.13	12.5 - 13.5	General-purpose castable
TOCAST-16	57.0	35.0	1600	2.15	12.0 - 13.0	General-purpose castable
TOCAST-16K	63.0	28.0	1600	2.20	11.0 - 12.0	General-purpose castable, high alumina
TOCAST-EX16P	58.5	32.0	1600	2.05	14.0 - 17.0	Universal Castable Pump for Pressure Transfer
TOCAST-T16	49.0	40.0	1600	1.85	19.0 - 21.0	General-purpose castable for trowel application
TOCAST-EX17K	79.5	15.0	1750	2.55	8.0 - 9.5	General-purpose High strength Wear resistance Corrosion resistance
TOCAST-EX18K	96.0	0.1	1800	3.00	7.5 - 8.5	General-purpose high-strength wear-resistant burner tiles, etc.
TCS-EX145	48.0	46.0	1500	2.35	6.0 - 8.0	LCC High-Strength Heating Furnace Trolleys, etc.
CALDE® CAST M 28 HR	50.9	42.7	1550	2.35	6.0 - 8.0	MCC High-strength furnace side walls and ceilings, etc.
TCS-EX170	83.0	12.0	1700	2.85	5.5 - 7.0	LCC High-strength WH furnace hearths, curved tiles, etc.
INTRACAST 360 SR	82.8	11.4	1600	2.90	5.0 - 6.0	LCC High-strength, wear-resistant WH furnace hearths, etc.
TCS-HF150	50.0	42.0	1500	2.35	6.5 - 7.5	LCC High strength, high fluidity Heated furnace bogies, etc.
TCS-AM5	93.0	1.1	1800	3.17	5.0 - 6.0	ULCC Highly corrosion-resistant Mass blocks, etc.
CALDE® CAST LB 70 C/R	64.0	30.0	1600	2.40	5.2 - 7.2	LCC Inflow plastic material
CALDE® CAST LX 58	56.5	39.2	1650	2.50	5.6 - 6.0	LCC Volume Stability for Heating Furnaces
CALDE® CAST NB 82 QD	82.0	13.5	1650	2.75	6.0 - 7.0	QD Cement-free High-strength WH furnace hearths etc.
CALDE® SOL CAST F 48	47.0	50.0	1550	2.30	SOL Binder	SOL Binder High Strength For furnace cars and similar equipment
CALDE® SOL CAST B 86 G6	86.0	10.5	1650	2.95	SOL Binder	SOL Binder High Strength WH Furnace Floor etc.
CALDE® SOL CAST M 75	76.0	23.0	1800	2.70	SOL Binder	SOL Binder High Strength WH Furnace Floor etc.
Plastic material, patching material						
CJ-PLAST 165AB	50.0	45.0	1650	2.45	-	Plastic material Ceiling and side walls
CJ-PLAST 175AB	75.0	20.0	1750	2.70	-	Plastic material Ceiling and side walls
CJ-PLAST 180AB	89.5	9.0	1800	2.85	-	Plastic material High-temperature areas and burner vicinity
CALDE® PATCH PT 90 HR	89.0	6.0	1250	2.7	7.0 - 7.6	High-strength patching compound for on-site mixing
CALDE® STIX PB 85 C/G	84.0	9.5	1300	2.85	7.0 - 9.0	High-strength patching compound For on-site mixing Spray-applicable
CALDE® PATCH PB 82 U	82.0	9.0	1600	2.90	-	Phosphate Bonding Compound
Sprayed material						
TOSHOT-12AR	23.0	62.0	1200	1.82	Nozzle adjustment	General-purpose flue duct
CALDE® GUN C 28	54.0	35.5	1500	2.00	Nozzle adjustment	General-purpose furnace ceiling and side walls
TOSHOT-14K	38.0	48.0	1400	2.15	Nozzle adjustment	High-strength type furnace side wall
TOSHOT-15K	54.0	35.0	1550	2.25	Nozzle adjustment	High-strength type furnace side wall
TOSHOT-M60	56.2	35.3	1600	2.05	Nozzle adjustment	Dry-applied plastic material
TOSHOT-X70	70.0	21.8	1700	2.25	Nozzle adjustment	Dry-applied plastic material for high temperatures
CALDE® SOL GUN M 55 S5	58.0	34.0	1600	2.35	Nozzle adjustment	SOL Binder Dry-Spray Material

Product name	Chemical composition		Maximum operating temperature (°C)	Construction requirements (t/m³)	Standard water addition volume(%)	Application areas, features
	Al <sub>2</sub> O <sub>3</sub>	SiO <sub>2</sub>				
Insulating castable						
CJ-ROCKS	29.5	35.5	1000	0.40	-	Super Insulation (λ = 0.13) Sprayed Trowelled
TOCAST L-6 C/G	33.0	40.0	900	0.65	88 - 93	Spray application Pouring application Trowel application
TOCAST L-10 C/G	27.5	56.5	1100	0.95	50 - 55	Spray application Pouring application Trowel application
TOCAST L-13 C/G	37.0	46.0	1300	1.20	40 - 46	Spray application Pouring application Trowel application
CASTYNA-15HS	71.0	25.0	1550	0.95	60 - 65	Pouring, for high temperatures

- The figures stated are representative values and are not guaranteed. They are subject to change without notice.
- For products ending with C/G, the physical property values are those at the time of pouring.
- The required quantity of sprayed material does not include rebound loss or finishing loss.
- We also stock a wide range of other castables. Please feel free to enquire.



### Burner

- TOSHOT-X70
- TOSHOT-M60
- CJ-PLAST 180AB
- CJ-PLAST 175AB
- CJ-PLAST 165AB
- TOCAST-EX18K
- TOCAST-EX17K
- CALDE® CAST NB 82 QD
- CALDE® CAST LB 70 C/R
- CALDE® SOL CAST B 86 G6

### Side Wall

- TOSHOT-X70
- TOSHOT-M60
- CJ-PLAST 175AB
- CJ-PLAST 165AB
- CALDE® CAST M 28 HR
- TOCAST-16K
- CASTYNA-15HS
- CALDE® SOL CAST B 86 G6
- TOSHOT-15K

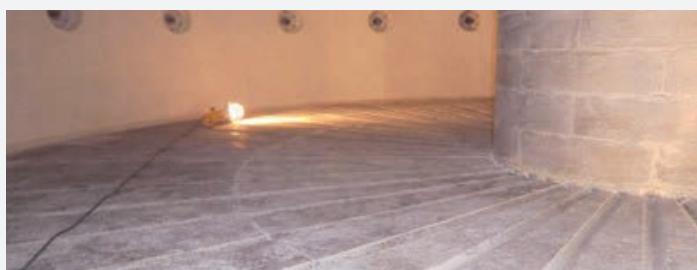


### Roof

- TOSHOT-X70
- TOSHOT-M60
- CJ-PLAST 175AB
- CJ-PLAST 165AB
- TCS-HF150
- TOCAST-EX16P
- CALDE® CAST LX 58
- CALDE® CAST M 28 HR

### Skid&Post

- CASTYNA-15HS
- TOCAST-EX15
- TOCAST-16
- CALDE® SOL CAST F 48
- CASTYNA-T15
- TOCAST-T16
- CALDE® PATCH PB 82 U
- CALDE® PATCH PT 90 HR



### Hearth

- TCS-EX170
- TCS-EX145
- TCS-HF150
- CALDE® SOL CAST B 86 G6
- CALDE® CAST NB 82 QD

### Others

- CALDE® PATCH PB 82 U
- CALDE® PATCH PT 90 HR
- CALDE® STIX PB 85 C/G
- TOSHOT-12AR
- TOSHOT-14K



